

DG-7/11KW-T2

(App) Portable EV Charger

Product Description

We provide our customers with complete AC charging products for electric vehicles. The main products are EV wallboxes, mode 2 EV charging cables, mode 3 EV charging cables and EV charging connectors. We are also able to provide OEM and ODM services for our customers.V

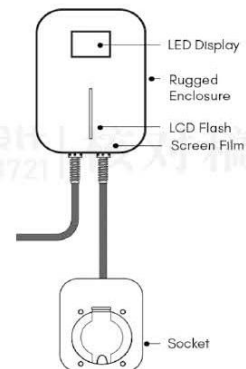


(App) Portable EV Charger DG-7/11KW-T2

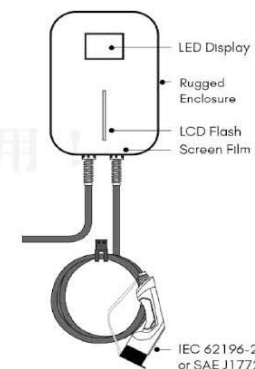
Product Description

This is a simple wallbox, which is divided into 2 kinds: Charging Cable Type and Socket Type, depending on the way the EV is connected. It comes with a colorful LCD display(Optional) that allows users to clearly see the current charging status including charging time, voltage, current internal temperature and etc. It can automatically fix non-hardware faults that occur during charging. Faults that require manual repair will be displayed on the LCD screen. The housing is sturdy and has an IP65 rating. It can be easily installed on the wall. If the customer prefers wallbox to be installed on the stand, we can provide the matching one. The APP wallbox and the RFID wallbox appearing below are upgraded versions of this product, with the same consistent performance and installation method.

Mode 2: Portable Ev Charger with a type 2 cable (1.3 inch LED)



Mode 2: Portable Ev Charger with a type 2 cable



Input & Output

Power rating	7KW(1 Phase)/ 11 KW(3 Phase) /22KW(3 Phase)
Charging interface type	IEC 61851 IEC 62196-2,SAE J1772
Input & Output voltage	AC220V±10%(1 Phase)/ AC380V±10%(3 Phase)
Output current	1 6A/32A
Frequency	45-65HZ

Protection

Overvoltage protection	YES
undervoltage protection	YES
Over load protection	Yes
short circuit protection	Yes
ground protection	Yes
over temperature protection	Yes
lightning protection	Yes

(App) Portable EV Charger DG-7/11KW-T2

CHT

Function and Accessory

WIFI/4G/OCPP1.6/LAN	Optional
RFID(2 user cards)	Optional
RCD	Type A / type A+6mA DC
Temperature Monitoring	Yes
The Chip Automatically Repairs Faults	Yes
4.3 inch display	Optional
LED Indicator light	Yes
RFID	Optional
APP	YES
Intelligent power adjustment	Yes
Easy to Install	Install estimated time is 10-15 minutes.
Home load balancing(DLB)	Optional

Working environment

IP grade	>IP65
Working temperature	-40~+65°C
Working altitude	<2000m
Working Humidity	5%-95% no condensation
Cooling mode	Natural cooling
MTBF	>100000H
Special protection	UV resistance
Standby power	3W/5W(With LCD)

Mechanical

Dimension	220(L) x 95(W) x 65(H)mm
Cable length	3.5m/5m/10m Optional
Weight	3.5kg (including charging gun)

Certificate

Certificate	CE,OZEV LIST,UKCA,SASO,TUV,CB
-------------	-------------------------------

CHT

CREATE HOPEFUL
TOMORROW

DG-7/11KW-T2

(App) Wallbox EV Charger

Product Description

This is an APP wallbox which is suitable for home use and easy to install. It has stable performance and a complete protection mechanism. Charging current, charging amount and other detailed charging parameters can be found on the APP. Besides, these parameters should be set through APP before charging. The APP is equipped with an automatic upgrade program which can make sure that our customers always get the latest APP version. The charger can also be used with a stand.

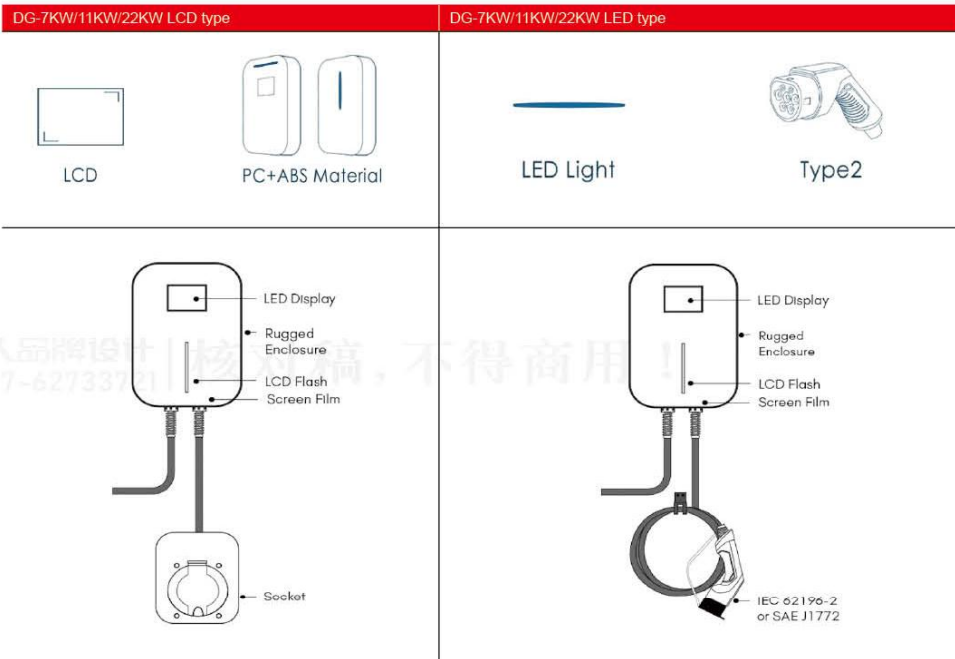


(App) Wallbox EV Charger DG-7/11KW-T2

CHT

Product Description

This is a simple wallbox, which is divided into 2 kinds: Charging Cable Type and Socket Type, depending on the way the EV is connected. It comes with a colorful LCD display(Optional) that allows users to clearly see the current charging status including charging time, voltage, current internal temperature and etc. It can automatically fix non-hardware faults that occur during charging. Faults that require manual repair will be displayed on the LCD screen. The housing is sturdy and has an IP65 rating. It can be easily installed on the wall. If the customer prefers wallbox to be installed on the stand, we can provide the matching one. The APP wallbox and the RFID wallbox appearing below are upgraded versions of this product, with the same consistent performance and installation method.



Input & Output	
Power rating	7KW(1 Phase)/ 11 KW(3 Phase) /22KW(3 Phase)
Charging interface type	IEC 61851 IEC 62196-2,SAE J1772
Input & Output voltage	AC220V±10%(1 Phase)/ AC380V±10%(3 Phase)
Output current	1 6A/32A
Frequency	45-65HZ

(App) Wallbox EV Charger DG-7/11KW-T2

CHT

Protection	
Overvoltage protection	YES
undervoltage protection	YES
Over load protection	Yes
short circuit protection	Yes
ground protection	Yes
over temperature protection	Yes
lightning protection	Yes

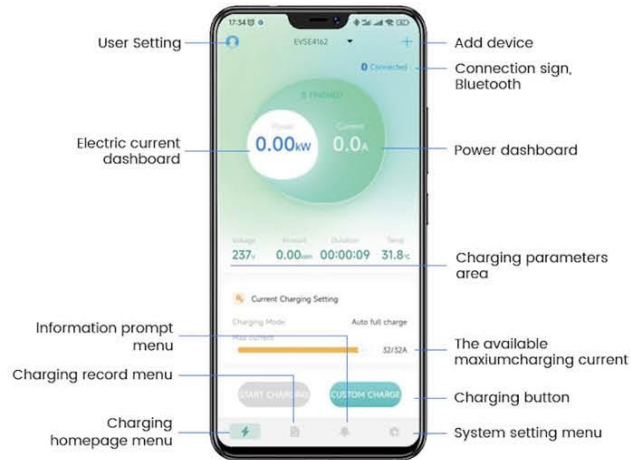
Function and Accessory	
WIFI/4G/OCPP1.6/LAN	Optional
RFID(2 user cards)	Optional
RCD	Type A / type A+6mA DC
Temperature Monitoring	Yes
The Chip Automatically Repairs Faults	Yes
4.3 inch display	Optional
LED Indicator light	Yes
RFID	Optional
APP	YES
Intelligent power adjustment	Yes
Easy to Install	Install estimated time is 10-15 minutes.
Home load balancing(DLB)	Optional

Working environment	
IP grade	>IP65
Working temperature	-40~+65°C
Working altitude	<2000m
Working Humidity	5%-95% no condensation
Cooling mode	Natural cooling
MTBF	>100000H
Special protection	UV resistance
Standby power	3W/5W(With LCD)

Mechanical	
Dimension	5M(16.4FT) standard,or other size customizable
Cable length	8kg (including charging gun)
Weight	8kg (including charging gun)

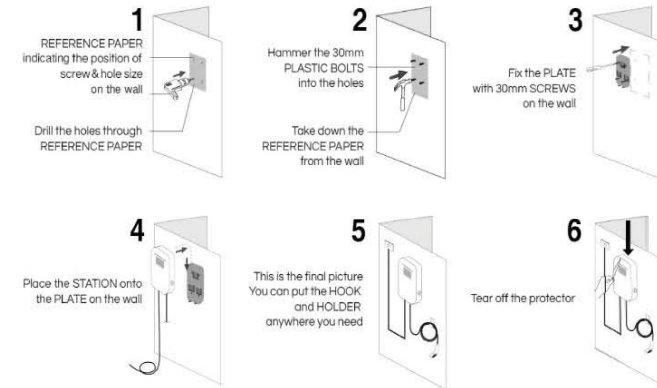
Mounting Accessories	
Wall-mounting bracket	Yes
Ground-mounting pole	Optional

Certificate	
Certificate	CE,OZEV LIST,UKCA,SASO,TUV,CB

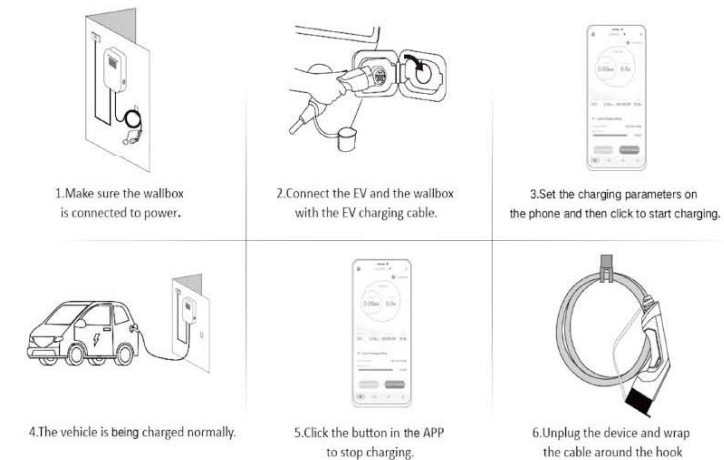


- APP Remote Control**
Start and stop charging with Bluetooth control.
- Charging History**
Fast charging history, anytime, anywhere.
- Charging Billing Settings**
Single billing, quantitative billing, billing records.
- Fault Reminder**
Low voltage, over voltage, over current, short circuit, over temperature, CP error.
- Firmware Upgrade**
Perform an app version upgrade.
- User Settings**
Nickname, privacy, FAQ, etc.

Installation guide



Installation guide



◆ **NOTE:** 1. After the vehicle is fully charged, the device will automatically stop charging.
2. Please read the instructions carefully before use.

DG-7/11KW-T2

(App) Floor EV Charger

Product Description

This is an APP wallbox floor stand Charging Station, which is suitable for home use and easy to install. It has stable performance and a complete protection mechanism. Charging current, charging amount and other detailed charging parameters can be found on the APP. Besides, these parameters should be set through APP before charging. The APP is equipped with an automatic upgrade program which can make sure that our customers always get the latest APP version. The charger can also be used with a stand.



(App) Floor EV Charger

DG-7/11KW-T2

Product Description

This is an APP wallbox which is suitable for home use and easy to install. It has stable performance and a complete protection mechanism. Charging current, charging amount and other detailed charging parameters can be found on the APP. Besides, these parameters should be set through APP before charging. The APP is equipped with an automatic upgrade program which can make sure that our customers always get the latest APP version. The charger can also be used with a stand.

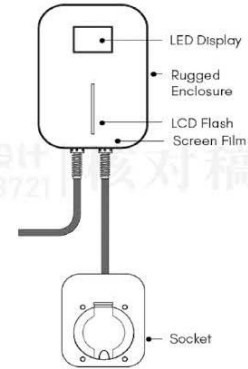
DG-7KW/11KW/22KW LCD type



LCD



PC+ABS Material



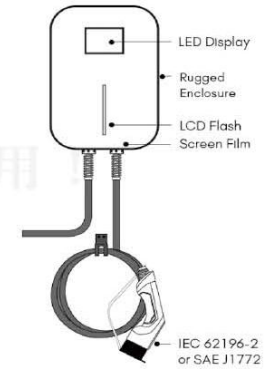
DG-7KW/11KW/22KW LED type



LED Light



Type2



Input & Output

Power rating	7KW(1 Phase)/ 11 KW(3 Phase) /22KW(3 Phase)
Charging interface type	IEC 61851 IEC 62196-2,SAE J1772
Input & Output voltage	AC220V±10%(1 Phase)/ AC380V±10%(3 Phase)
Output current	1 6A/32A
Frequency	45-65HZ

Protection

Overvoltage protection	YES
undervoltage protection	YES
Over load protection	Yes
short circuit protection	Yes
ground protection	Yes
over temperature protection	Yes
lightning protection	Yes

(App) Wallbox EV Charger DG-7/11KW-T2

CHT

Function and Accessory	
WIFI/4G/OCPP1.6/LAN	Optional
RFID(2 user cards)	Optional
RCD	Type A / type A+6mA DC
Temperature Monitoring	Yes
The Chip Automatically Repairs Faults	Yes
4.3 inch display	Optional
LED Indicator light	Yes
RFID	Optional
APP	YES
Intelligent power adjustment	Yes
Easy to Install	Install estimated time is 10-15 minutes.
Home load balancing(DLB)	Optional

Working environment	
IP grade	>IP65
Working temperature	-40~+65°C
Working altitude	<2000m
Working Humidity	5%-95% no condensation
Cooling mode	Natural cooling
MTBF	>100000H
Special protection	UV resistance
Standby power	3W/5W(With LCD)

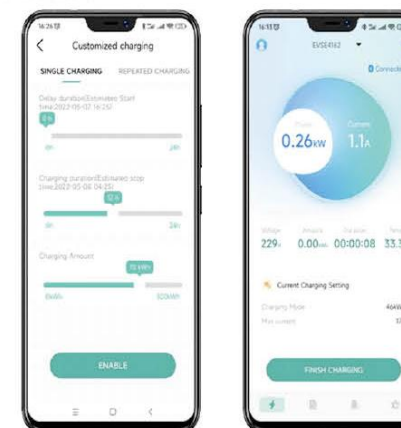
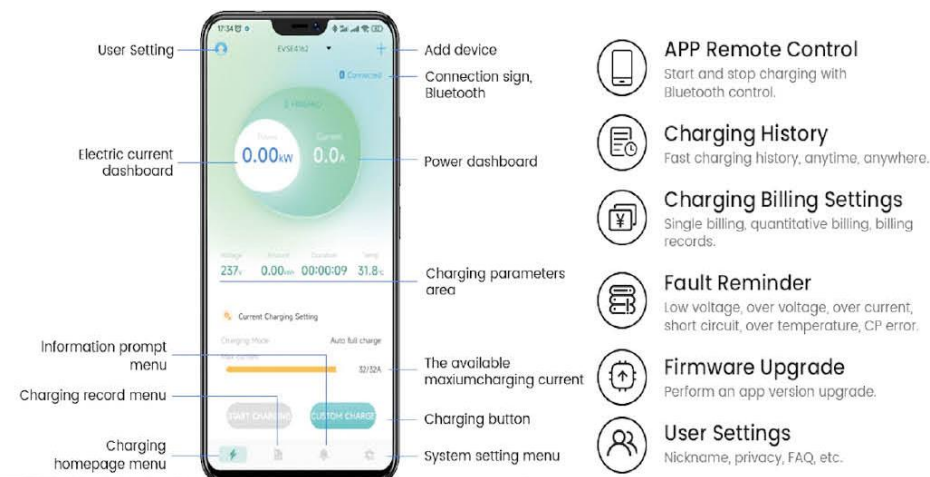
Mechanical	
Dimension	350(H) x 240(W) x 95(D)mm
Cable length	5M(16.4FT) standard, or other size customizable
Weight	8kg (including charging gun)

Mounting Accessories	
Wall-mounting bracket	Yes
Ground-mounting pole	Optional

Certificate	
Certificate	CE,OZEV LIST,UKCA,SASO,TUV,CB

(App) Floor EV Charger DG-7/11KW-T2

CHT



CHARGING PARAMETER SETTINGS

Charging parameter settings could be recorded in APP and auto used for each charging.

The 3 main charging parameter settings include:

1. Delayed Charging
2. Charging Duration
3. Charging Amount

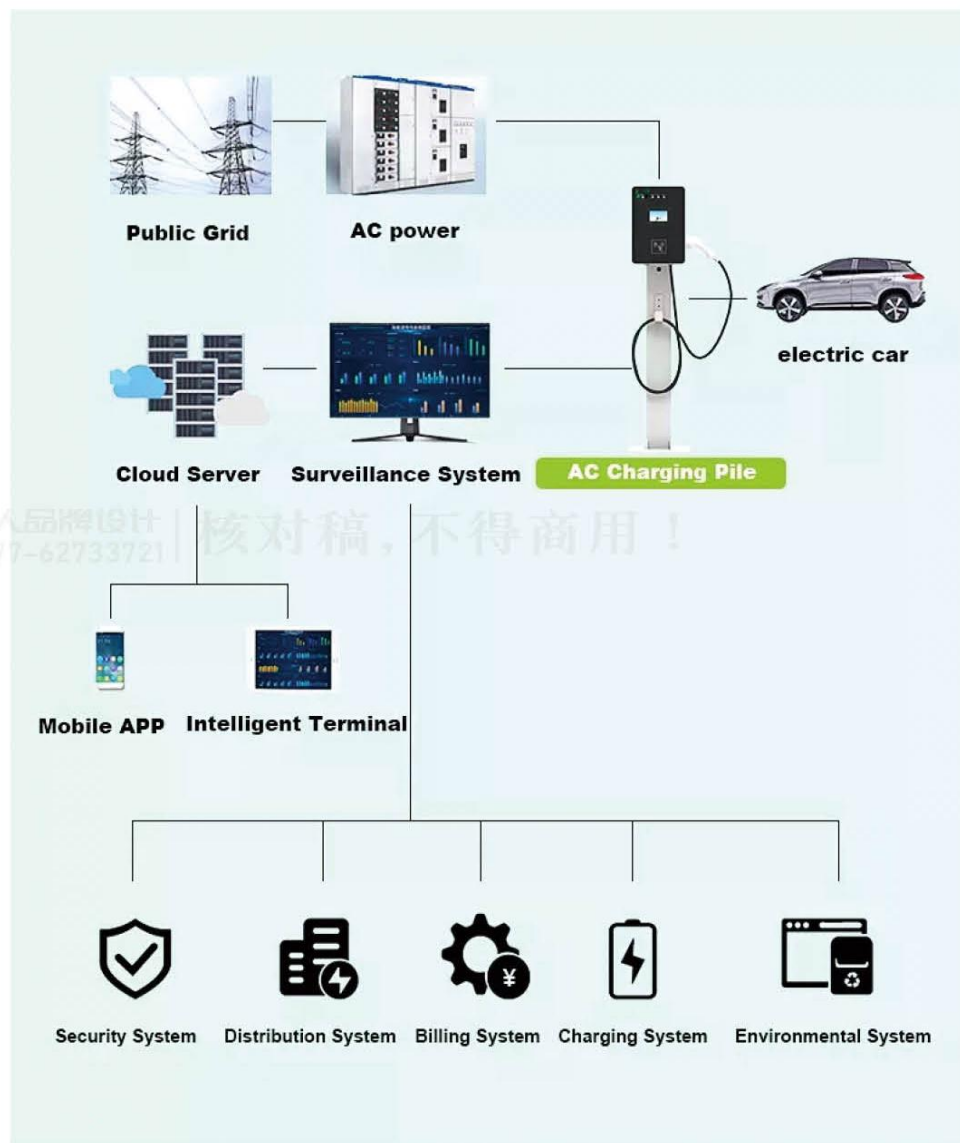
Single Charge & Repeated Charge could be realized at your request in the APP.

Single Charge

The parameter needs to be set each-time

Repeated Charge

Settings could be recorded in the APP and used for each charging by default.

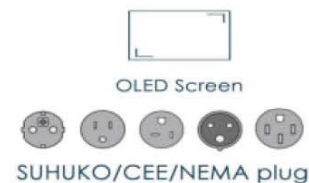


Product Description

These are simple models, which is divided into 2 kinds: LED Type and Standard Type, depending on the way the Charger with or without screen. It comes with a LED display(Optional) that allows users to clearly see the current charging status including charging time, voltage, current internal temperature and etc. These are charging boxes with LED screen, which displays the ongoing current, voltage and other charging data. If there is a fault, it will be displayed on the screen. The charging current can be adjusted as well

Mode 2: Portable Ev Charger with a type 2 cable (1.3 inch LED)

Mode 2: Portable Ev Charger with a type 2 cable



Input & Output

Power rating	7KW(1 Phase)/ 11 KW(3 Phase) /22KW(3 Phase)
Charging interface type	IEC 61851 IEC 62196-2,SAE J1772
Input & Output voltage	AC220V±10%(1 Phase)/ AC380V±10%(3 Phase)
Output current	1 6A/32A
Frequency	45-65HZ

Protection

Overvoltage protection	YES
undervoltage protection	YES
Over load protection	Yes
short circuit protection	Yes
ground protection	Yes
over temperature protection	Yes
lightning protection	Yes

Working environment

IP grade	>IP65
Working temperature	-40~+65°C
Working altitude	<2000m
Working Humidity	5%-95% no condensation
Cooling mode	Natural cooling
MTBF	>100000H
Special protection	UV resistance, anti-vehicle rolling design
Standby power	<1W

Function and Accessory

Plug and play	Yes
1.3 inch OLED display	Optional
LED Indicator light	Yes
Temperature control	Optional

Mechanical

Dimension	220(L) x 95(W) x 65(H)mm
Cable length	3.5m/5m/10m Optional
Weight	3.5kg (including charging gun)

Certificate

Certificate	CE,OZEV LIST,UKCA,SASO,TUV,CB
-------------	-------------------------------