



DG201A Earth Fault Relay

Features

- Microprocessor based numerical relay
- Current measurement based on fundamental frequency
- Low-set definite time relay
- High-set instantaneous relay
- Separate low-set and high-set indicators
- Option to disable the high-set relay
- Front panel access to the test function
- Complies with IEC 60255-26 standard

Technical Specifications

Ratings:

- Rated current (I_n): 5 A
- Rated frequency: 50 Hz
- Burden: < 0.3 VA at I_n
- Thermal withstand: 4 x I_n continuous

Auxiliary Supply:

- Model DG201A-240A: 198 ~ 265 V AC
- Model DG201A-110A: 94 ~ 127 V AC
- Supply frequency: 50 Hz
- VA rating: 3 VA typical

Setting Ranges:

- Low-set ($I >$): 0.1 A to 2.0 A
: 2% to 40%
- Low-set delay time (DELAY): 0.05 sec to 1.0 sec
- High-set ($I >>$): $I >$ to 10 x $I >$ or disable
- High-set delay time ($t >>$): Instantaneous

Contacts:

- Trip contact (R1): Manual reset type
- Contact Arrangement: Change-over
- Contact rating : 5 A, 250 V AC ($\cos\phi = 1$)
- Contact material : Silver alloy
- Expected electrical life: 100,000 operations at rated current
- Expected mechanical life: 5×10^6 operations

Indicators:

- Auxiliary supply: Green indicator
- Pick-up: Red indicator
- Trip: Red indicator

Performance:

- Adjustable accuracy: Less than $\pm 5\%$

- Repeatability: Less than 0.5% of full scale

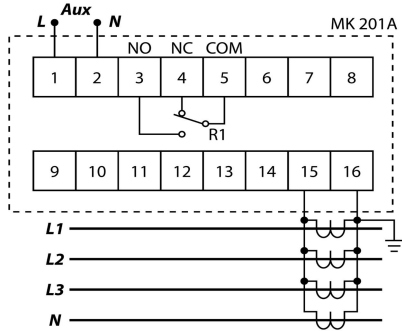
Mechanical:

- Mounting: Panel mounting
- Front panel: Standard DIN 96 mm x 96 mm
- Approximate weight: 0.6 kg

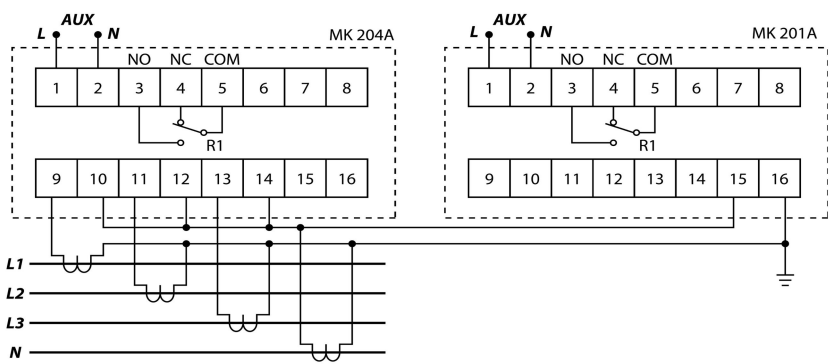
Environmental Conditions:

- Temperature: -5°C to +55°C
- Humidity: 56 days at 93% RH and 40°C non-condensing

Typical Application Diagram



Combined Overcurrent&Earth Fault Relays



Product Dimensions

